

DOC PDF SERVER™

RELEASE NOTES

Version 5.2
July 2011

Contents

Release Notes	3
Introduction.....	3
Server operating system support.....	3
Microsoft Office integration	3
Office 2003	3
Office 2007 and Office 2010	3
32- and 64-bit driver support	4
Installing the driver for the alternate platform.....	4
System Requirements.....	7
Other issues addressed	7

gDoc PDF Server v5.2

Release Notes

This document is the Release Note for gDoc PDF Server v5.2

Introduction

The latest release of gDoc PDF Server continues to provide enterprise-wide PDF creation that can be managed centrally. The latest refresh brings the operating system and client software support right up-to-date.

Server operating system support

This version has been updated to work correctly on Windows Server 2008 and Windows Server 2008 R2, the server variants of Windows Vista and Windows 7. Specifically, the product now works correctly with UAC (User Account Control) active.

Microsoft Office integration

Office 2003

As with previous versions of gDoc PDF Server, a macro is available that adds a toolbar for PDF creation from Office 2003 (Word, Excel & PowerPoint).

Office 2007 and Office 2010

An Office Add-In that adds functionality as the Office 2003 macro is available for Office 2007. New for version 5.2, the same Add-In now supports Office 2010 (x86 or x64).

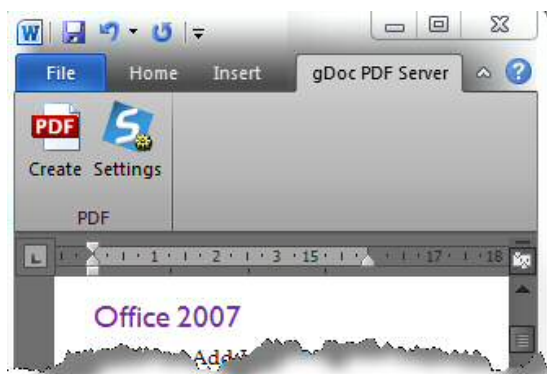


Figure 1: The Add-In adds a ribbon toolbar to Office 2007 or 2010

32- and 64-bit driver support

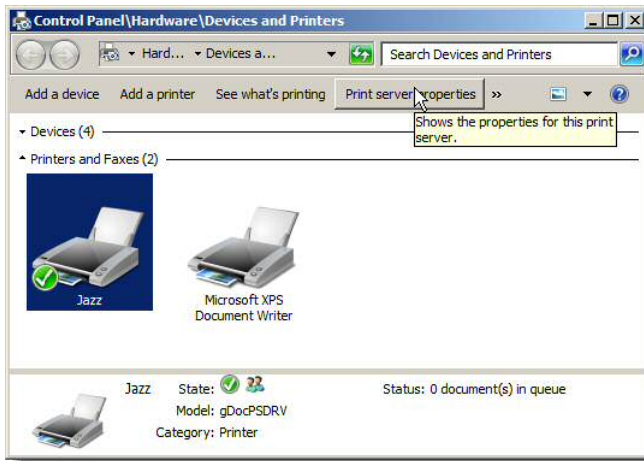
After installation of gDoc PDF Server, the administrator can set up SmartInput folders and associate a virtual printer that is shared on the network. The driver for the virtual printer will follow the platform on which gDoc PDF Server is installed, i.e. a 64-bit server will have a 64-bit driver. Follow the instructions below to add support for clients running on the opposing platform, in this case 32-bit versions of Windows.

Installing the driver for the alternate platform

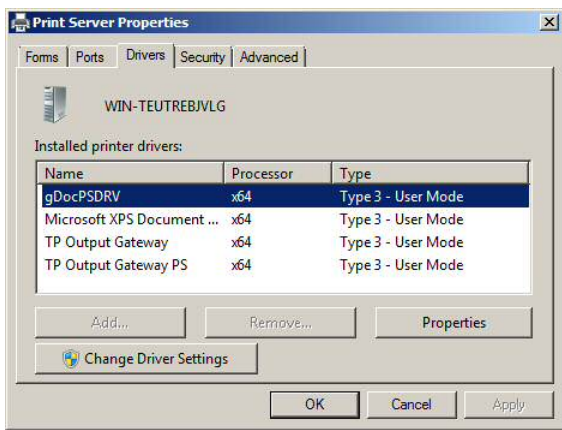
The following instructions assume that gDoc PDF Server has been installed on a 64-bit Windows Server, and a SmartInput folder has been configured with a virtual printer named “Jazz”.

Windows 2008 and Windows 2008 R2

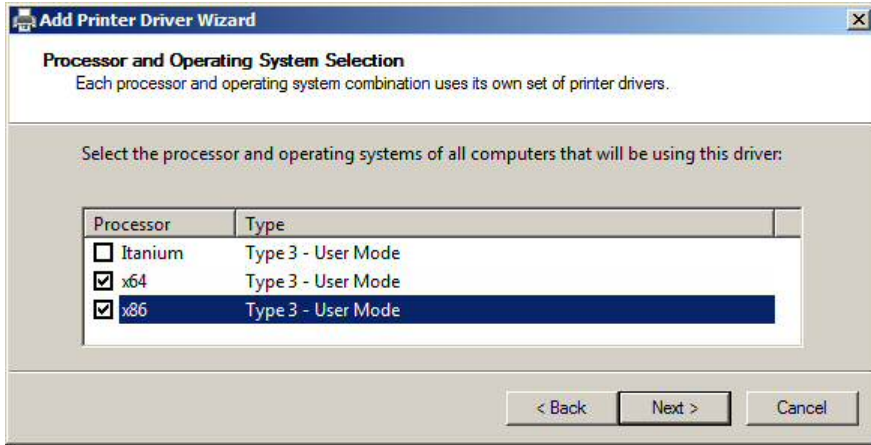
1. Open the *Devices and Printers* control panel.
2. Select a printer to enable the *Print Server Properties* button on the toolbar, and click it.



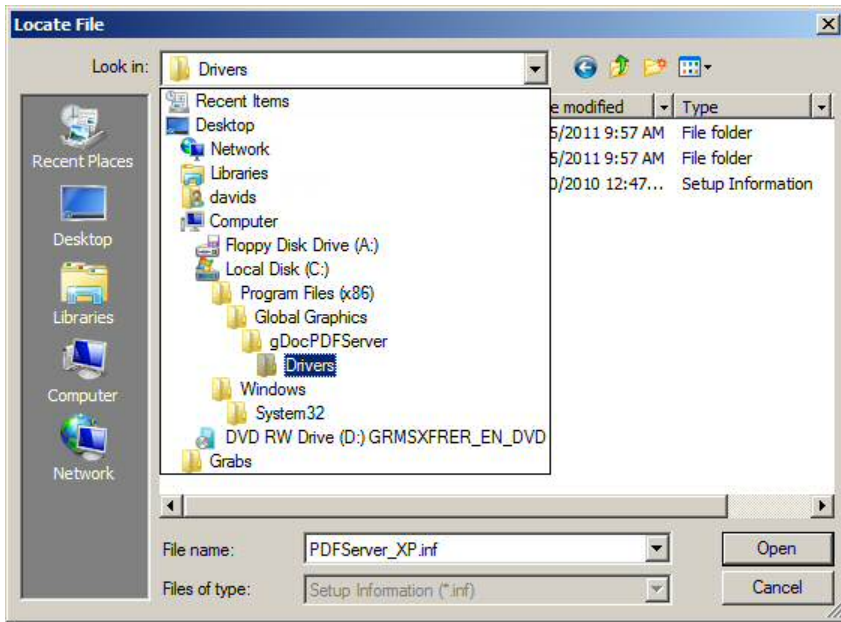
3. Select the *Drivers* tab. The driver for gDoc PDF Server is named **gDocPSDRV**.



4. Click *Change Driver Settings* to enable changes.
5. Click on *Add...* to start the **Add Printer Driver** wizard, and click *Next*



6. On *Processor and Operating System Selection*, check the unchecked platform, in this case x86.



7. Browse for the driver files. They are installed in the Program Files folder (or Program Files (x86) on a 64-bit OS), for example:

C:\Program Files (x86)\Global Graphics\gDocPDFServer\Drivers

8. Select the driver file PDFServer_XP.inf. The driver is identified and can now be installed.



9. Because the driver is digitally signed, you must confirm installation.



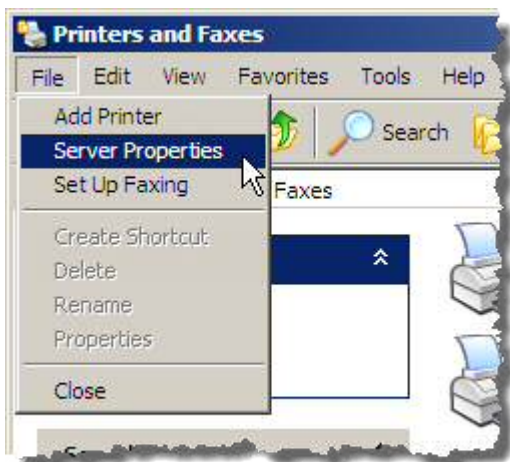
Once the driver is installed, the Printer Sever properties will list **gDocPSDRV** for both x86 and x64.

Name	Processor	Type
gDocPSDRV	x64	Type 3 - User Mode
gDocPSDRV	x86	Type 3 - User Mode
Microsoft XPS Document ...	x64	Type 3 - User Mode
TP Output Gateway	x64	Type 3 - User Mode
TP Output Gateway PS	x64	Type 3 - User Mode

10. Close the Print Server Properties

Windows Server 2003

On Windows Server 2003, the server properties are accessed from the *File* menu in the *Printers and Faxes* control panel.



Otherwise the procedure for adding the extra driver is the same as already described.

System Requirements

These are updated to reflect the improved server operating system support.

<i>Server platforms</i>	<i>Client platforms</i>
	<i>x86 and x64 systems</i>
Windows Server 2003 SP3 (x86 & x64)	Windows XP SP3, Windows Vista SP2 & Windows 7
Windows Server 2008 SP2 (x86 & x64)	Microsoft Office 2007 & Office 2010
Windows Server 2008 R2 SP1 (x64)	(Microsoft Office 2003 also supported)
Windows Server 2003 SP2 running Terminal Services	Mac OS X (10.35 or higher)
Windows 2003 Server running Citrix Metaframe Presentation Server 4.5	

Other issues addressed

Screen-redraw: The workflow screen now draws correctly on Server 2008 and Server 2008 R2. Previously, connecting arrows were sometimes truncated.

Running as a Windows service: The issue that prevented gDoc PDF Server running reliably as a Windows service on Server 2008 and Server 2008 R2 has been addressed.

64-bit installation: The installer now includes the necessary pre-requisites to install correctly on all 64-bit versions of Windows Server.

COPYRIGHT AND TRADEMARKS

gDoc PDF Server Release Notes

Version 5.2

Document Issue: 1.0

July 2011

Copyright © 2011 GLOBAL GRAPHICS SOFTWARE LIMITED

All Rights Reserved. No part of this publication may be reproduced, stored in a retrieval system, or transmitted, in any form or by any means, electronic, mechanical, photocopying, recording, or otherwise, without the prior written permission of Global Graphics Software Limited.

The information in this publication is provided for information only and is subject to change without notice. Global Graphics Software Limited and its affiliates assume no responsibility or liability for any loss or damage that may arise from the use of any information in this publication.

The software described in this book is furnished under License and may only be used or copied in accordance with the terms of that License.

gDoc, gDoc Creator, gDoc Fusion, the gDoc Logo, gDoc Complexity Made Simple, the smarter alternative are trademarks of Global Graphics Software Ltd, which may be registered in certain jurisdictions.

Fonts copyright © 2000-2009 Timo Lehtinen. All Rights Reserved. <http://www.timolehtinen.com/type>

Other brand or product names are the registered trademarks or trademarks of their respective holders.

US Government Use

Notice to U.S. government end users. This Software is a commercial computer software program developed at private expense and is subject to the following Restricted Rights Legend: "Use, duplication, or disclosure by the United States Government is subject to restrictions as set forth in (i) FAR 52.227-14 Alt III, (ii) FAR 52.227-19; as applicable. Use by agencies of the Department of Defense (DOD) is subject to Global Graphics customary commercial license as contained in the accompanying license agreement, in accordance with DFAR 227.7202-1 (a). For purposes of the FAR, the Software shall be deemed 'unpublished' and licensed with disclosure prohibitions, rights reserved under the copyright laws of the United States.