

 **DOC™** RELEASE NOTES
gDoc PDF Server™

Version 5.0
June 2009

gDoc PDF Server v5.0 Release Notes

These release notes contain information for version 5.0 of gDoc PDF Server, and includes details of new features, enhancements and fixes that have been implemented in this release. A list of supported platforms and installation instructions are also provided.

Supported platforms and resources

gDoc PDF Server runs on the following platforms:

Server-side platforms	Microsoft® Windows Server™ 2003 (x86 / x64).
	Microsoft Windows® XP Professional (SP2) and XP Professional x64. Requires third-party protocol to enable connections from Mac clients.
	Microsoft Windows Server 2003 (x86 / x64) running Windows Terminal Services.
	Citrix Presentation Server™ 4.0 / 4.5 running on Microsoft Windows Server 2003.
Client-side platforms	Microsoft Windows® XP Professional (SP2) and XP Professional x64.
	Mac OS X (10.3.5 and above).
	Windows Vista (x86 / x64).

Upgrading gDoc PDF Server

gDoc PDF Server is based on Jaws PDF Server technology. If you are upgrading from a previous version of Jaws PDF Server, it is necessary to remove the old version first. However, before you do this, export your existing workflows so they can be used in the latest version of gDoc PDF Server.

1. Start the current version of PDF Server that is installed on your system.
2. In turn, for each of the workflows that you want to export, open a workflow and choose **File > Export**. Enter a name for the file and then click **Save**. This saves the workflow, and all the module settings, in a MWF export file (*.MEF). Repeat this for each workflow that you want to preserve, and then close PDF Server.

3. You can now remove PDF Server from your system: in your system Control Panel, open **Add or Remove Programs** and remove **PDF Server**.
4. Restart Windows to reset your system and to remove the PDF Server printers from your system.
5. Install gDoc PDF Server 5.0—see [“Server-side installation”, on page 3](#).
6. Start gDoc PDF Server and, in turn, import each configuration file with **File > Import**. Save the workflow(s) with **File > Save**. Once the workflows have been saved they can be opened in PDF Server 5.0 as normal, with **File > Open**.

Server-side installation

The instructions in this section are for server-side installation of gDoc PDF Server 5.0. Client-side installation instructions for Windows and Macintosh can be found in [“Client-side installation”, on page 4](#).

1. Insert the gDoc PDF Server installation CD-ROM or, if you downloaded it from Global Graphics, your PDF Server download folder, and double-click **gDoc PDF Server 5.0.exe**.
2. Follow the instructions as they appear in the InstallShield wizard, which will guide you through the installation procedure.
3. In the wizard, select which PDF Server applications you want to install from the following:

gDoc PDF Server Program Files

Must be installed for PDF Server to work. This item is selected by default.

Sample Files

Sample configuration workflows. Item is not selected by default.

gDoc PDF Server as Windows Service

See the section: *“Running PDF Server as a Windows service”* in the main gDoc PDF Server user manual for details. This item is not selected by default.

gDoc PDF Server Documentation

This item is selected by default.

4. When asked during the installation if you wish to remove module security ([Figure 1](#)), choose **Yes** if you intend to share job processing across more than one installation of PDF Server, otherwise choose **No**.

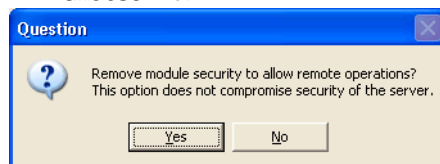


Figure 1 Choose No to remove module security

5. When the installer has finished copying the application files across, click **Finish** to close the wizard.
6. You must now restart Windows to register the PDF Server components with the operating system.

Client-side installation

The instructions in this section describe the client-side installation of gDoc PDF Server 5.0. Server-side installation instructions can be found in [“Server-side installation”, on page 3.](#)

To install the gDoc PDF Server printer on Windows

1. Open the system Control Panel and open Printers and Faxes.
2. Double-click Add Printer to run the Add Printer Wizard.
3. In the wizard, select the option to add a new network printer and click Next.

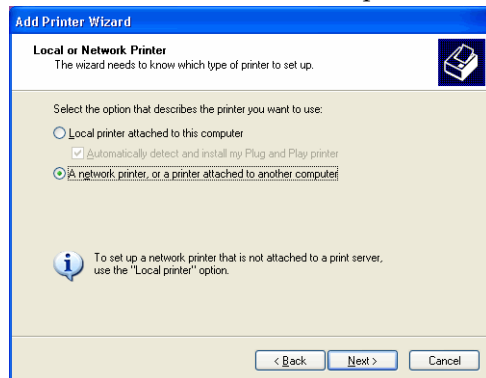


Figure 2 Adding a new network printers

4. If you know the name and network path to the PDF Server printer you are adding, enter it in the Name box. Otherwise, choose Browse for a printer, click Next and select the printer from the list of network printers that are available.

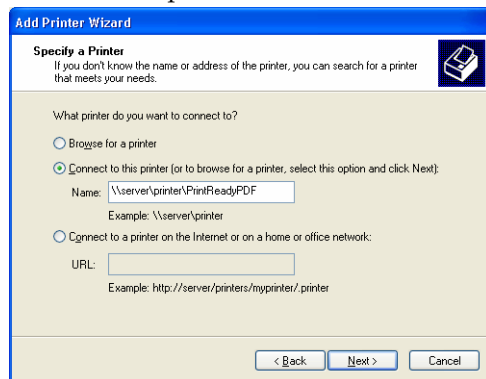


Figure 3 Enter the path to PDF Server printer

5. The wizard will now install the PDF Server printer, installing the correct drivers on your system in the process. When asked by the wizard if you wish to make it the default printer, choose **No**.

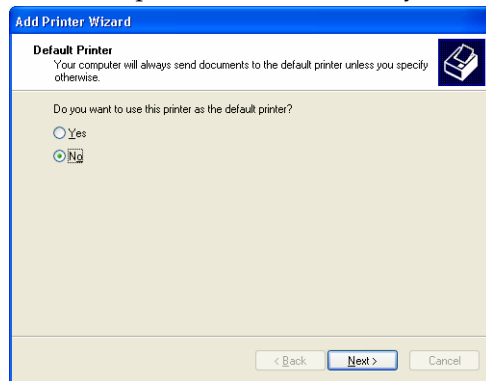


Figure 4 Choose No to not set the printer as the default printer

6. To complete the printer installation, click **Finish** in the wizard. You will now be able to use this printer to print documents to PDF Server.

To install the gDoc PDF Server printer on Mac OS X

Before installing the printer, the PDFCreator .PPD file should be placed in the following folder:

```
<Hard disk>/Library/Printers/PPDs/Contents/Resources/en.lproj/
```

Note: The folder name **en.lproj** will vary with the language.

You will find this file from its typical location in the machine with PDF Server installed, under:

```
C:\Program Files\Global Graphics\gDocPDFServer\PPD\
```

Once a PPD file is installed, the Printer can be installed:

In the Printer Manager, click **Add**.

1. Select the PDF Server shared printer from the list.
2. In the next dialog, click **Select Manually** to select the required printer description.
3. Next, select **Global Graphics Software Ltd.** as the printer model from the list.
4. Select the **gDoc PDF Server** from the list of models.

The new shared printer can now be used to print documents to gDoc PDF Server.

Known issues in gDoc PDF Server 5.0

10403	Some memory issues with large files remain.
20088	When the File Type is set to ps in the Input module, eps files can be processed.
20089	The priority setting in the Input module is ineffective.
20120	Office macros: PowerPoint macros incorrectly leave 'Print to File' set
164430	Office macros: Word macros on x86 clients always generate a second PDF named "Unknown.PDF". This can be deleted by a simple "Delete-process" executed after PDF creation.
164429	Office macros: Word and PowerPoint macros on x64 clients created PDF files named with a temp number and not the original name.
20132	When installing gDoc PDF Server as a Windows Service the number of modules (Input, Queuer and Creator) should be limited to 26.
220141	Problem while creating PDF with macros for the second time without saving the source file.

Documentation status

The following table lists the documentation supplied with this release of gDoc PDF Server. Please use the documentation as a primary source of information regarding the product and its functionality.

Manual name	Document status	Supplied format
gDoc PDF Server 5.0 User Manual	Prepared for v5.0	PDF
gDoc PDF Server 5.0 Server Macros	Updated for v5.0	PDF
gDoc PDF Server 5.0 Release Notes	Prepared for v5.0	PDF

COPYRIGHT AND TRADEMARKS

gDoc PDF Server Release Notes

Version 5.0

Document Issue: III

June 2009

Part Number: PDF-SERVER-5.0

Copyright © 2009 GLOBAL GRAPHICS SOFTWARE LIMITED

All Rights Reserved. No part of this publication may be reproduced, stored in a retrieval system, or transmitted, in any form or by any means, electronic, mechanical, photocopying, recording, or otherwise, without the prior written permission of Global Graphics Software Limited.

The information in this publication is provided for information only and is subject to change without notice. Global Graphics Software Limited and its affiliates assume no responsibility or liability for any loss or damage that may arise from the use of any information in this publication. The software described in this book is furnished under License and may only be used or copied in accordance with the terms of that License.

Adobe, Adobe Photoshop, Adobe Type Manager, InDesign, Acrobat, Display PostScript and PostScript are registered trademarks and Distiller and PostScript 3 are trademarks of Adobe Systems Incorporated.

gDoc, gDoc Creator, gDoc Fusion, the gDoc Logo, gDoc Complexity Made Simple, the smarter alternative are trademarks of Global Graphics Software Ltd, which may be registered in certain jurisdictions.

Fonts copyright © 2000-2009 Timo Lehtinen. All Rights Reserved. <http://www.timolehtinen.com/type>

Other brand or product names are the registered trademarks or trademarks of their respective holders.

US Government Use

Notice to U.S. government end users. This Software is a commercial computer software program developed at private expense and is subject to the following Restricted Rights Legend: "Use, duplication, or disclosure by the United States Government is subject to restrictions as set forth in (i) FAR 52.227-14 Alt III, (ii) FAR 52.227-19; as applicable. Use by agencies of the Department of Defense (DOD) is subject to Global Graphics customary commercial license as contained in the accompanying license agreement, in accordance with DFAR 227.7202-1 (a). For purposes of the FAR, the Software shall be deemed 'unpublished' and licensed with disclosure prohibitions, rights reserved under the copyright laws of the United States."